

BUILT-IN MICROWAVE OVEN

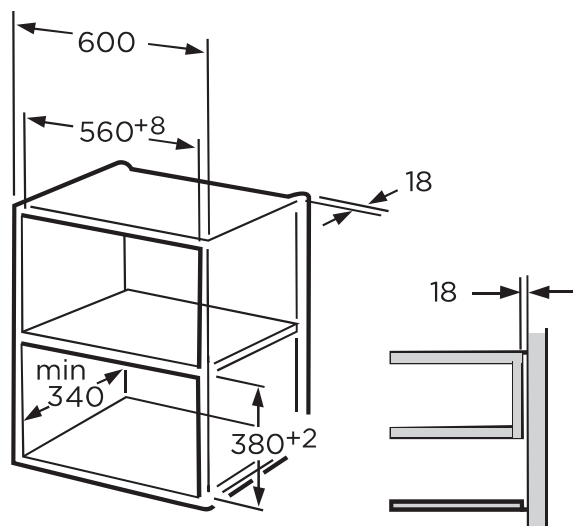
USER MANUAL

MW 20 DI BK

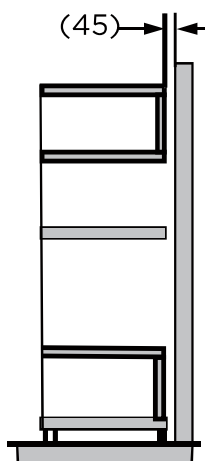
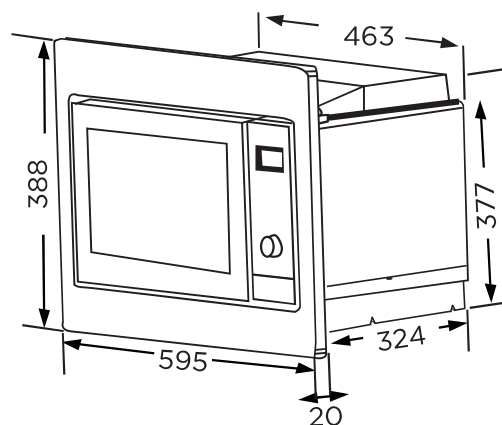
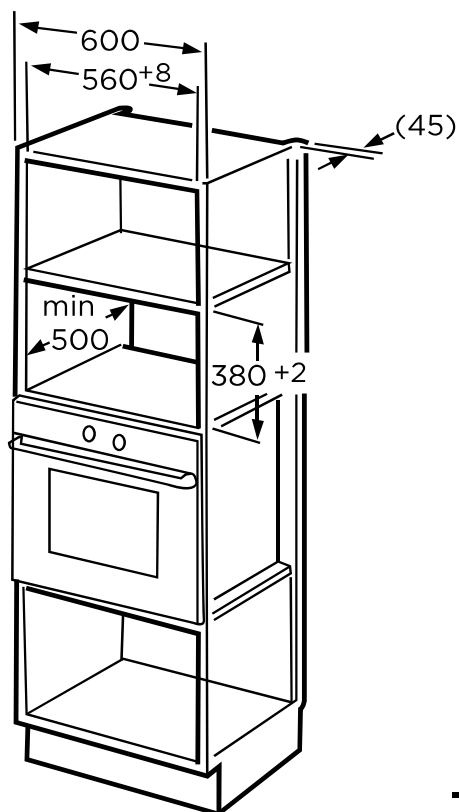
Warning notices: Before using this product, please read this manual carefully and keep it for future reference. The design and specifications are subject to change without prior notice for product improvement. Consult with your dealer or manufacturer for details.
The diagram above is just for reference. Please take the appearance of the actual product as the standard.

Installation Instructions

1.



2.

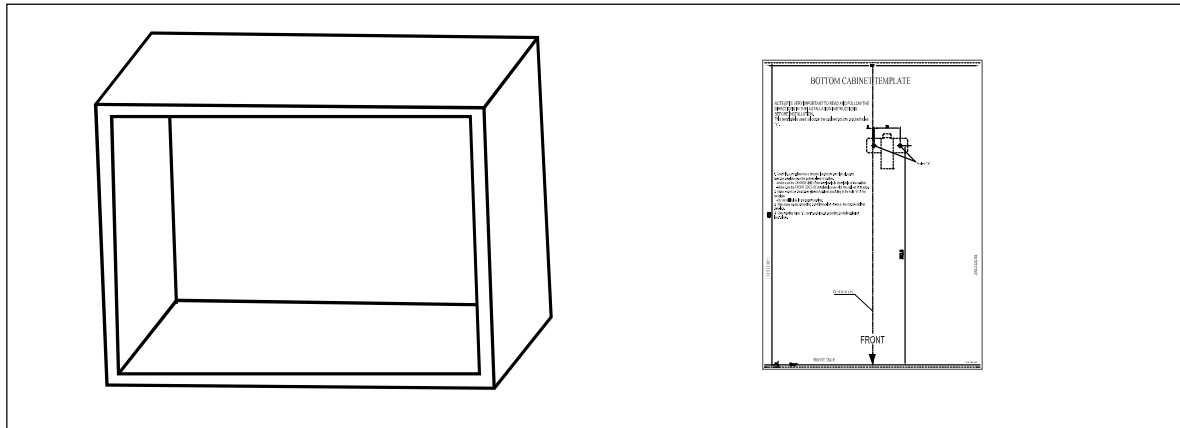


NOTE:

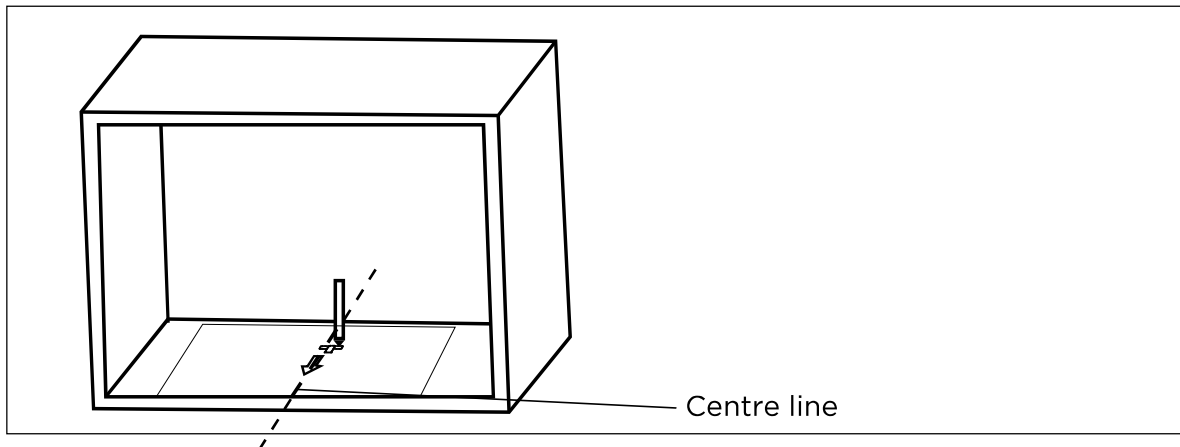
The bracket and bottom cabinet template are needed when installing in both installations.

B. Prepare The Cabinet

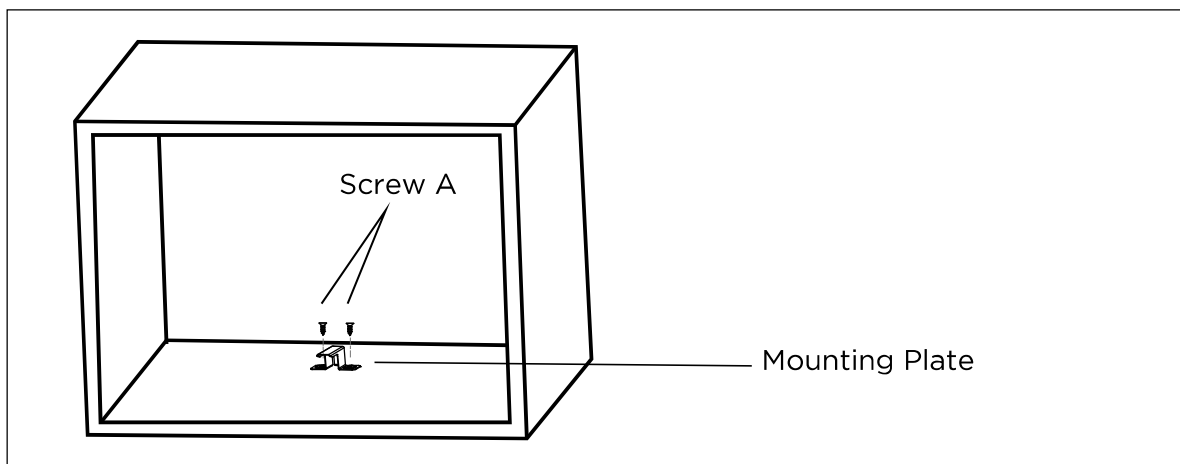
- Read the instruction on the BOTTOM CABINET TEMPLATE, put the template on the bottom plane of cabinet.



- Make the marks on the bottom plane of cabinet according to marks "a" of the template.

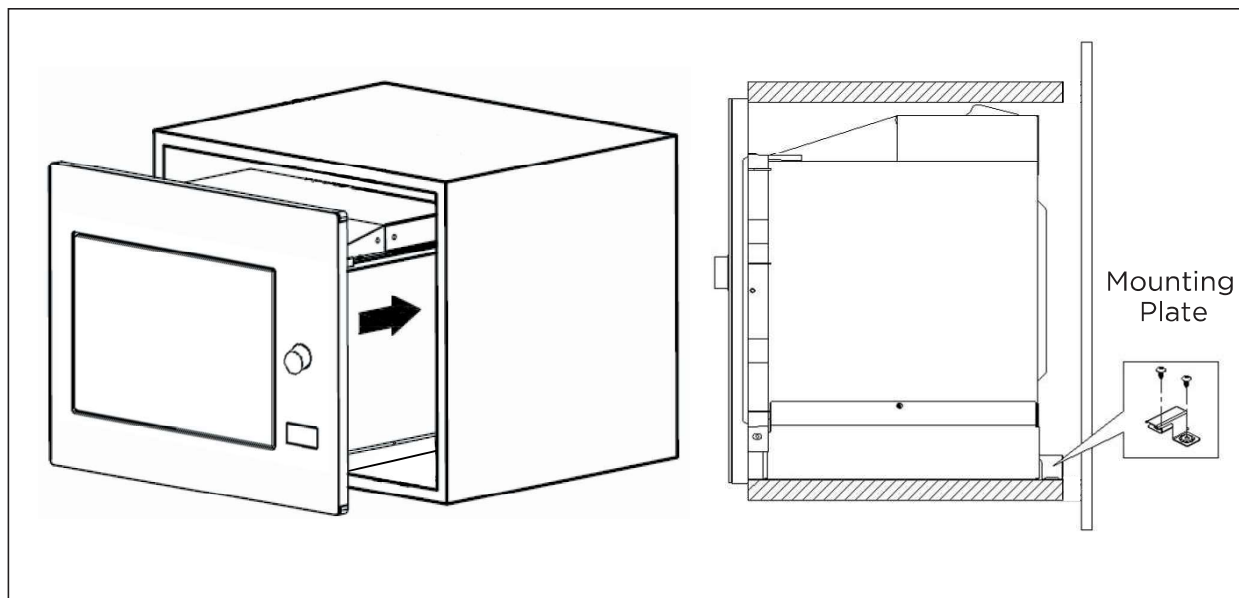


- Remove the bottom cabinet template and fix the mounting plate with screw A.



C. Install The Oven

- Install the oven to the cabinet
 - Make sure the back of the oven is locked by mounting plate .
 - Do not trap or kink the power cord.



- Open the door, fix the oven to the cabinet with Screw B, at the installation hole. Then fix the Trim-kit plastic cover to the installation hole.

